



ALPHA AD1 Double Sided Mobile Porcelain Whiteboard

Create new insights, brainstorm issues, inspire students... wherever the meeting location is. Mobility and the capturing of information is part of 'Agile Thinking' and problem solving for groups. Open plan design can be effortlessly transformed into a work environment that encourages teamwork.

The new ALPHA AD1 Mobile Whiteboard offers an aesthetic, practical collaboration tool. Featuring a double sided Vitreous Enamel (porcelain) writing surface that is conditionally warranted for 25 years and is scratch resistant.

- 25 year surface warranty
- A-shaped design is more stable compared to a traditional mobile whiteboard
- Large magnetic double-sided porcelain scratch resistant writing surface
- Satin silver aluminum frame finish
- Four easy glide locking castor wheels
- Minimal assembly required, just screw on the wheels, then it's ready for use
- Fold flat and store when not in use
- Large internal storage tray to put all board accessories in one place
- Dimensions: 1800mm high x 900mm wide
- Weight: 28kg



ITEM #	SIZE	PRICE
VAPB1890	1800 x 900 mm	\$999 + GST

**FREIGHT CHARGES MAY BE APPLICABLE
IN SOME REGIONAL AREAS**



HUDDLE Double Whiteboard Mobile Unit with Storage



Multifunctional Mobile Double Whiteboard Wall with Storage Perfect for Future Focused Learning environments

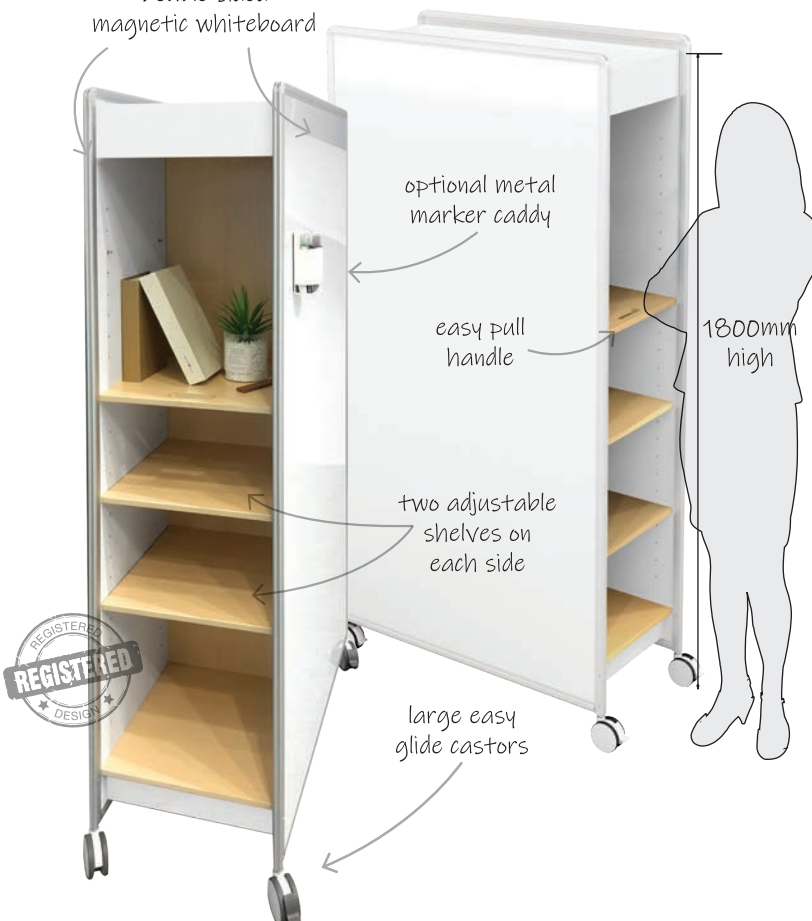
Easily moveable double sided magnetic whiteboard with storage that is split into two making it perfect for shared and adaptable learning environments. Each end has two adjustable shelves giving 8 compartments in total for storage.

- Four large easy glide castor, 2 lockable
- Easy pull handle on either end
- Two adjustable shelves each end with one fixed
- Optional magnetic marker caddy
- Dimensions: 840W x 1800H x 374D mm

ITEM #	DESCRIPTION	PRICE
HUD180	HUDDLE Double Whiteboard Mobile 840 x 1800 x 374 (mm)	\$1,195 + GST
HUD180C	Optional Accessory: Metal Marker Caddy	\$29 + GST

**FREIGHT CHARGES MAY BE APPLICABLE
IN SOME REGIONAL AREAS**

Double sided magnetic whiteboard



ALL ORDERS OVER \$250 (EX GST) DELIVERED FREE*

MOBILE BOARDS



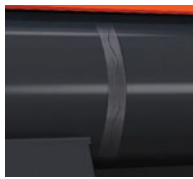
BUZZ Ultra Mobile Double Sided Whiteboard

Bold Australia Designed Double Sided Porcelain Mobile Whiteboard For Agile Education Spaces

- Quality 1180 x 1100mm double-sided mobile magnetic porcelain whiteboard
- Orange aluminium powder coated frame offers a visual beacon to class or team members
- The four charcoal coloured legs of the BUZZ suggest movement with four semi-recessed soft gliding castors that can be used on hard or flat surfaces
- Legs can be folded flat for convenient storage and requires only a hex key which is supplied and stored in the middle of the barrel of the BUZZ
- Features a 480mm removable magnetic pen tray
- Dimensions: 1100W x 1180H x 600D mm



Injection moulded nylon leg lock



Magnetic pen shelf



Leg adjusting key storage in barrel



Easy glide PU wheels



ITEM #	PRICE
BUZZ-800	\$1,695 + GST

FREIGHT CHARGES MAY BE APPLICABLE IN SOME REGIONAL AREAS



Mobile Tablet Whiteboard

The new VISIONCHART 'Whiteboard Tablet Mobile' recognises the importance of agile group learning. Ideas don't last forever and our Tablet Mobile lets you capture, collaborate.. then create !

The growing popularity of open and flexible learning and work defined spaces mean that furniture and specific items like whiteboards, need to adapt and change.

- Comes with 12 individual double sided 300 x 450mm whiteboard tablets
- Ideal for STEM education, collaboration and brainstorming
- 1000 x 1000mm double sided whiteboard with tablet hangers
- Mobile holds 6 tablets per side
- Tablets feature rounded grey moulded plastic edges with carry handle and a light permanent grid on one side
- Mobile whiteboard features a built-in pen tray and locking castors



ITEM #	DESCRIPTION	PRICE
VM1010-T	Mobile tablet whiteboard with 12 tablets	\$925 + GST
WT4530	Individual 300 x 450 mm whiteboard tablet	\$39 + GST

FREIGHT CHARGES MAY BE APPLICABLE IN SOME REGIONAL AREAS





Communicate Mobile Whiteboard

- 8 year surface warranty
- Quality double sided magnetic whiteboard surface
- Tubular steel construction in Pearl Silver powder coated finish
- Pivots 360° with a unique locking mechanism
- Full length pen tray
- Strong lockable castors
- Easy assembly



Improved Frame, including new pivoting handle with unique locking mechanism, and strong locking castor wheels

ITEM #	SIZE	PRICE
VM1290	1200 x 900 mm	\$445 + GST
VM1590	1500 x 900 mm	\$485 + GST
VM1512	1500 x 1200 mm	\$515 + GST
VM1812	1800 x 1200 mm	\$595 + GST

FREIGHT CHARGES MAY BE APPLICABLE IN SOME REGIONAL AREAS



Porcelain Mobile Whiteboard

- 25 year surface warranty
- Quality double sided porcelain magnetic whiteboard surface
- Pivots 360° with a unique locking mechanism
- Tubular steel construction in Pearl Silver powder coated finish
- Unique & stylish centre bar with built-in full length Pen Tray
- Strong locking castors
- Easy assembly



THE BEST

Magnetic Porcelain mobile whiteboard with unrivalled surface guarantee of 25 years. Ideal for heavy usage



Improved Frame, including new pivoting handle with unique locking mechanism, and strong locking castor wheels

ITEM #	SIZE	PRICE
VM1290-P	1200 x 900 mm	\$660 + GST
VM1212-P	1200 x 1200 mm	\$695 + GST
VM1512-P	1500 x 1200 mm	\$825 + GST
VM1812-P	1800 x 1200 mm	\$890 + GST

FREIGHT CHARGES MAY BE APPLICABLE IN SOME REGIONAL AREAS



ASPIRE Vertical Sliding Mobile Whiteboards

Ideal for younger audiences & students with disabilities

- 2 x 1200 x 900mm whiteboards, double sided, so there is 4 writing surfaces
- Board 1: Double sided porcelain
- Board 2: Double sided commercial magnetic
- Easy to use - boards glide up and down
- Strong steel stand, epoxy coated black
- Tested 10,000 times!



ITEM #	SIZE	PRICE
SMV1290	1200 x 900 mm	\$895 + GST

FREIGHT CHARGES MAY BE APPLICABLE IN SOME REGIONAL AREAS

MOBILE BOARDS



Mobile Combo Felt board / Whiteboard

- Side 1: Quality Magnetic whiteboard surface
Side 2: Grey pinnable fabric
- Versatile and practical - ideal solution for primary schools, early education or anywhere you need to hang posters & use a whiteboard, saves wall space
- Board rotates then locks into position
- Can be locked into different angled writing positions
- Tubular steel construction in Pearl Silver powder coated finish
- Unique & stylish centre bar with built-in full length Pen Tray
- Strong locking castors
- Easy assembly



WHITEBOARD:



PINBOARD:



ITEM #	SIZE	PRICE
VM1290C	1200 x 900 mm	\$450 + GST
VM1512C	1500 x 1200 mm	\$540 + GST

FREIGHT CHARGES MAY BE APPLICABLE
IN SOME REGIONAL AREAS



"SPACE" Mobile Glassboard - White Magnetic or Clear Glass

Clear Innovation & Communication

- Tough and durable glass surface
- Open communication - Can use both sides
- Satin silver steel frame with locking castors
- Use standard markers or fluro paint markers
- Choice of White Magnetic or Clear glass
- On White Magnetic surface only - super strong magnets can be used to hold plans or paper



ITEM #	DESCRIPTION	SIZE	PRICE
SMC1290	Clear Glass	1210 x 855 mm	\$595 + GST
SMW1290	White Magnetic Glass	1210 x 855 mm	\$820 + GST

FREIGHT CHARGES MAY BE APPLICABLE
IN SOME REGIONAL AREAS



Mobile Music Board

- Permanently ruled with 4 music staves on one side and plain whiteboard the other side
- Lines will never peel or rub off
- Magnetic laminate drywipe surface
- Pivoting board
- Locking castors
- Pen tray with red, blue and black markers included
- Available in 2 sizes
- **Wall Mountable Music Boards are on page 12**

ITEM #	BOARD SIZE	PRICE
VM1212-M	1200 x 1200 mm Supplied with Mobile Stand	\$625 + GST
VM1812-M	1800 x 1200 mm Supplied with Mobile Stand	\$995 + GST

FREIGHT CHARGES MAY BE APPLICABLE
IN SOME REGIONAL AREAS



Email: sales@eduequip.com.au

Toll Free PH: 1800 804 230

EDU Equip