

## PERIPHERALS

A range of projector mounts and accessories provide strength, reliability and good looks for installations in a multitude of environments. Make the most of your projector with quality Epson accessories...

### PROJECTOR MOUNTS AND ACCESSORIES

#### EPSON Short Throw Wall Mounts

- **ITEM CODE: ELP-MB45**  
to suite Epson Short Throw Projectors:  
EB-520, EB-525W, EB-535W
- **ITEM CODE: ELP-MB64**  
to suite Epson Short Throw Projectors:  
EB-L200SW



**\$145 + GST**  
BOTH MODELS

#### EPSON Ultra Short Throw Wall Mount

- **ITEM CODE: ELP-MB62**  
to suite Epson Ultra Short Throw Projectors: EB-680, EB-685W, EB-675Wi, EB-685Wi, EB-695Wi, EB-735F, EB-725Wi, EB-735Fi, EB-1480Fi and EB-1485Fi (Mount is included with EB-1485Fi)



**\$169 + GST**  
ITEM # ELP-MB62

#### EPSON Cable Management & Control Box

- The simplest Cable Management and Projection Control solution
- Easy wall mount installation
- Centralised Control Box - Manage your Epson short throw or ultra short throw projector - power, AV mute, volume, sources; wall mounted, no remote control needed
- Consolidated Cable Management - Convenient wall placement helps avoid potential hazards.
- Easy, total control of your projector from one point



**\$345 + GST**  
ITEM # ELP-CB03

#### EPSON Installation Speakers

- Total 30W power output (2 x 15W)
- 1 x Powered, 1 x passive speaker
- RCA & 3.5 mm stereo inputs
- Wall mounts included
- Low power consumption (less than 0.7W in standby)
- Compatible with Epson ELP-CB03 control box



**\$189 + GST**  
ITEM # ELP-SP02

#### EPSON HDBaseT Transmitters

- **ELPHD01** Compatible Models:  
EB-1485Fi, EB-2265U, EB-G7200WNL, EB-G7500UNL, EB-G7905UNL, EB-L510U, EB-L610U, EB-L615U, EB-L1060UNL, EB-L1065UNL, EB-L1070UNL, EB-L1075UNL, EB-L520U, EB-L630U, EB-730U, EB-L735U, EB-L630SU, EB-635SU, EB-PU1007 and EB-PU1008



**\$375 + GST**  
ITEM # ELPHD01

- **ELPHD02** Compatible Models:  
EB-1485Fi, EB-805F, EB-L510U, EB-L610U/L615U, EB-L610W, EB-L520U, EB-L630U, EB-L635SU, EB-L630SU, EB-L730U/L735U, EB-2265U, EB-2250U, EB-G7400U, EB-G7500UNL, EB-G7905U, EB-G7200WNL, EB-G7000WNL, EB-G7800NL, EB-L1060U, EB-L1065U, EB-L1070U, EB-L1075U, EB-PU2010W, EB-PU2010B, EB-PU1008W, EB-PU1008B, EB-PU1007W, EB-PU1007B, EB-L1000U, EB-L1100U, EB-L12000U, EB-L13000U, EB-L1405U, EB-L1490U, EB-L1495U, EB-L1505U, EB-L1505UH, EB-L1755U, EB-L20000U, EB-L12000Q, EB-L25000U, EB-L30000U

**\$425 + GST**  
ITEM # ELPHD02

#### EPSON Wireless LAN Key

- High-speed, wireless network adapters plug directly into projector allowing quick and easy access to the LAN, peer-to-peer networks and mobile devices without wires or cables.



- **ITEM CODE: ELPAP10**  
to suite Projectors: EB-G7800NL, EB-G7000WNL, EB-G7200WNL, EB-G7400UNL, EB-G7500UNL, EB-G7905UNL, EB-L1000UNL, EB-L1100UNL, EB-L1200UNL, EB-L1300UNL, EB-L1405UNL, EB-L1505UNL, EB-L1505UHNL, EB-L1755UNL, EB-5000UNL, EB-525W, EB-535W, EB-2055, EV-2155W, EB-2165W, EB-2245U, EB-2250U, EB-2265U, EB-675W/Wi, EB-680/e, EB-685W/Wi, EB-695Wi, EB-696Ui, EB-1450Ui, EB-1460Ui, EB-1470Ui, EB-710Ui, EB-700Ui, EB-970, EB-980W, EB-990U, EB-L510U, EB-L610W, EB-L3000UNL, EH-TW8300, EH-TW9300/W, EH-TW6700/W, EH-LS100, EH-TW8400, EHTW9400/W, EH-LS500B

- **ITEM CODE: ELPAP11**  
to suite Projectors: EB-X51, EB-972, EB-982W, EB-L200SW, EB-735F, EB-725Wi, EB-735Fi, EB-1480Fi, EB-1485Fi, EB-L520U, EB-L730U, EB-L735U, EB-L630SU, EB-L635SU, EB-PU1007, EB-PU1008

**\$145 + GST**  
BOTH MODELS

#### Complete Cable Pack

- Complete pack of cabling for connection between Epson Ultra Short Throw / Interactive projector & Epson ELP-CB03 control box
- All cables are 5 metres in length
- Pack includes:  
1 x Control Cable, 2 x HDMI Cable, 1 x RCA Cable  
2 x Audio Cable, 2 x VGA to VGA Cable



**\$195 + GST**  
ITEM # IPCPACK

#### EPSON Interactive Finger Touch Unit

- Compatible Models:  
EB-725Wi, EB-735Fi and EB-1480Fi
- Convert your interactive projector into a Finger Touch unit. Compatible Wall Mount below.



**\$310 + GST**  
ITEM # ELPFT01

- Wall Mount for ELPFT01  
**ITEM CODE: ELP-MB63**  
**\$78 + GST**

EDUQUIP  
Toll Free PH: 1800 804 230  
Email: sales@eduquip.com.au

## Complete Cable Pack

- Complete pack of cabling for connection between Epson Ultra Short Throw / Interactive projector & Epson ELP-CB03 control box
- All cables are 5 metres in length
- Pack includes:
  - 1 x Control Cable
  - 2 x HDMI Cable
  - 1 x RCA Cable
  - 2 x Audio Cable
  - 2 x VGA to VGA Cable



**\$195 + GST**  
ITEM # IPCPACK

## HDMI Cables

- 2.0 4Kx2K 60Hz Cable
- 9 sizes to choose from
- Black in colour
- Individually packaged

ITEM #	LENGTH	PRICE
CB-HDM2-0.5M	0.5 metre	<b>\$9.95 + GST</b>
CB-HDM2-1M	1 metre	<b>\$10.45 + GST</b>
CB-HDM2-1.5M	1.5 metre	<b>\$11.45 + GST</b>
CB-HDM2-2M	2 metre	<b>\$12.95 + GST</b>
CB-HDM2-3M	3 metre	<b>\$14.45 + GST</b>
CB-HDM2-5M	5 metre	<b>\$20.95 + GST</b>
CB-HDM2-7.5M	7.5 metre	<b>\$49.95 + GST</b>
CB-HDM2-10M	10 metre	<b>\$69.00 + GST</b>
CB-HDM2-15M	15 metre	<b>\$139.00 + GST</b>



## Individual Projector Cables

- Code: DV7415  
15 Metre VGA-VGA Monitor Cable

**\$110 + GST**  
ITEM # DV7514

- Code: MAX-SV4/15  
15 Metre S-Video Cable

**\$80 + GST**  
ITEM # MAX-SV4/15

- Code: PRO-VD5/15  
15 Metre 3RCA Cable

**\$65 + GST**  
ITEM # PRO-VD5/15

- Code: CP3  
One of each of the above 3 Cables

**\$225 + GST**  
ITEM # CP3



## telehook Flush Projector Mount

- Flush mount
- Suits 90% of all projectors
- Supports up to 15 kgs
- Ceiling Mount
- Quick Release for easy maintenance
- Fast & easy installation
- Mounts projector: 127 mm from ceiling
- Max. roll adjustment: +/- 20 degree
- Max. pitch adjustment: +/- 40 degree
- 360 degree rotation

**\$125 + GST**  
ITEM # UFM



## telehook Pole Projector Mount

- Suits 90% of all projectors
- Supports up to 15 kgs
- Ceiling Mount
- Quick Release for easy maintenance
- Fast, easy installation
- Minimum drop of 400 mm
- Maximum drop of 900 mm
- Pan & tilt adjustment to 20 degree at projector for ease of use
- 360 degree swivel rotation
- Concealed Cable Management

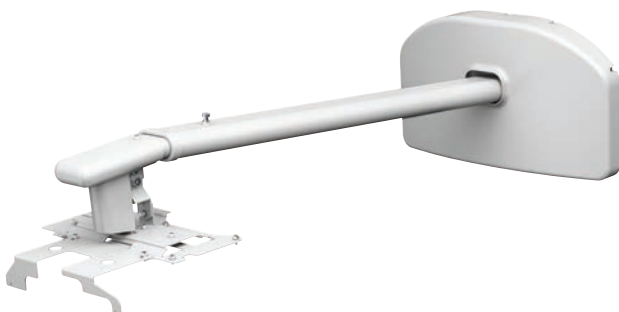
**\$175 + GST**  
ITEM # UPM



## EPSON Short Throw Wall Mounts

- **ITEM CODE: ELP-MB45**  
to suite Epson Short Throw Projectors:  
EB-520, EB-525W, EB-535W
- **ITEM CODE: ELP-MB64**  
to suite Epson Short Throw Projectors:  
EB-L200SW

**\$145 + GST**  
BOTH MODELS



## EPSON Ultra Short Throw Wall Mounts

- to suite Epson Ultra Short Throw Projectors: EB-680, EB-685W, EB-675Wi, EB-685Wi, EB-695Wi, EB-735F, EB-725Wi, EB-735Fi, EB-1480Fi and EB-1485Fi (Mount is included with EB-1485Fi)

**\$169 + GST**  
ITEM # ELP-MB62



# INSTALLATION SPEAKERS

## EPSON Installation Speakers

- Total 30W power output (2 x 15W)
- 1 x Powered, 1 x passive speaker
- RCA & 3.5 mm stereo inputs
- Wall mounts included
- Low power consumption (less than 0.7W in standby)
- Compatible with Epson ELP-CB03 control box (see page 19 for pricing on ELP-CB03)

Boasting 30W of crisp, clear sound, the ELP-SP02 active speakers enable every student to clearly hear the lesson, no matter where they are sitting in the room. Easily mounted to the wall, this powerful pair is the perfect partner the ELPCB03 Cable Management and Projector Control box.

The two speakers feature an inbuilt amplifier, and are connected with an included RCA cable from the left to the right speaker. Volume, bass and treble knobs are located on the front of one of the speakers. this speaker also includes a left and right RCA input (red/white) and a 3.5mm stereo jack (like a headphone plug).



**\$189 + GST**

ITEM # ELP-SP02

12 Month Warranty

## 2KAUDIO "No-buzz" Double-Power Speakers

- Auto-switch off "Green" speaker, designed specifically for education
- No buzz ever, and lowest power consumption of all education speakers
- Incredible sound quality and power; you will never need to turn volume up to max
- Easiest wall-mount installation with tilt so sound can be directed to the right area
- Total 60W power output (2 x 30W)
- **Reliability.** 2KAudio have sourced the highest quality components and got rid of those that weren't used
- **Sturdiness.** Put through hours of stress tests and quality inspections. You won't damage these, ever.
- **Quality Without The Price**
- 1 x Powered, 1 x Passive speaker
- RCA & 3.5mm stereo inputs
- Supplied with wall brackets
- Shipping weight 5.8kgs
- Speaker size: 178W x 240H x 193D (mm)

**\$169 + GST**

ITEM # 2KA-WMA30

12 Month Warranty



## shintaro 5.25" Powered Indoor Wall Speakers

- Ideal for Classrooms and Meeting Rooms where increased volume from projectors, TV's and IFPs is required
- 30 Watts RMS power delivers room filling sound
- Active/Passive pair, designed for indoor wall mounting
- Myler Dome Tweeter: resists humidity while delivering pristine highs
- 5.25" Polypropylene Woofer: delivers deep clear bass
- Full-motion Swivel Brackets
- Heavy-duty Terminal Connectors
- Auto ON/OFF Function: When there is no signal, it will automatically turn off
- Built-in amplifier
- Colour: White
- Weight: 2.53kgs
- Package includes: Two Steel mounting brackets, Speaker cable 10m, Stereo 3.5mm AUX Jack M to 2 x RCA M audio cable 10m, power cable & user manual



**\$155 + GST**

ITEM # 23SH-S720

12 Month Warranty

Email: sales@eduquip.com.au

Toll Free PH: 1800 804 230

EDU Quip